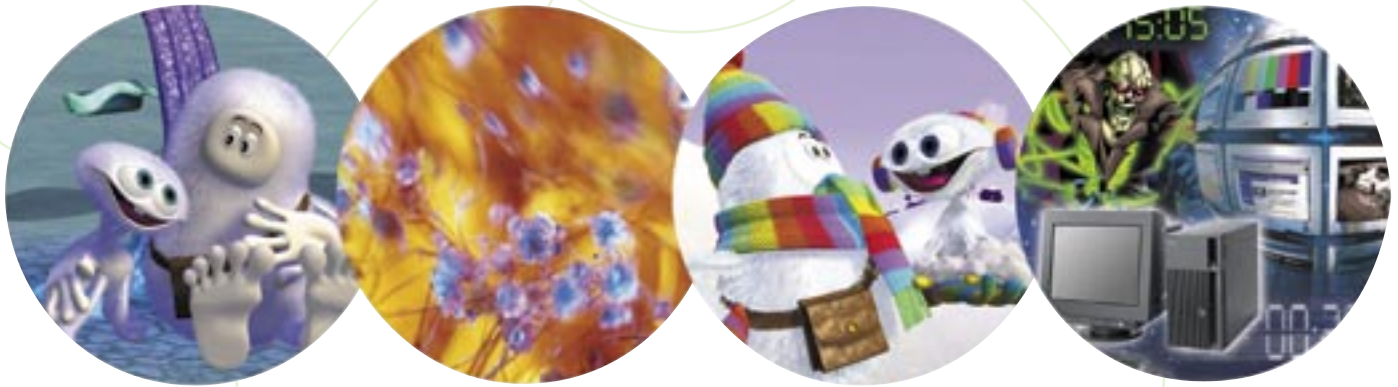


IBM Professional Workstations



...delivering superior application performance

The IBM IntelliStation professional workstation combines the highest performance PC technology with advanced capability usually found in UNIX™ workstations. They can be tailored to a wide range of tasks, and are available in small-form and full-size desktops, mini-tower and tower configurations, with single or dual processors and responsive 2D or 3D graphics.

The IBM IntelliStation™ is certified for Windows™ XP Professional (preloaded on IntelliStation E and M Pro models), Windows NT™ and major Linux distributions so customers can now run general business applications, as well as their technical applications, on the same system.

The IBM IntelliStation – providing exceptional workstation performance with the added advantage of offering the user considerable cost savings.

What is a workstation?

A workstation is a high performance, single user computer designed to host a range of specialised application software. The workstation marketplace is application driven with opportunities in the following sectors:

Digital Content Creation (DCC)

One of the fastest growing segments, it spans the media, entertainment and corporate industries. Solutions include pre-press and publishing, Web and content creation, 2D and 3D animation, and non linear video editing.

Mechanical CAD (MCAD)

2D/3D design and modelling in manufacturing, processing, oil and gas, engineering, construction and aerospace.

Electronic Design Automation (EDA)

Applications used by the electronics industry to assist with printed circuit board design, programmable logic devices and logic synthesis.

Financial Services Portfolio analysis

Order entry/routing, brokerage support and news feeds required by trading floors, banks and securities and brokerage firms.

Software Engineering Code

Creation, compilers, interactive databases, Web development and other processor-intensive applications used to develop software.

General Business

Incorporates other applications that need a powerful client platform, such as project planning, statistical analysis, training development, Desktop Publishing (DTP) and database analysis.

Geographic Information Systems (GIS)

Geographic analysis tools used in weather forecasting, sales analysis, population forecasting and land use planning.

Science Statistical

Analysis and 3D modelling used in research laboratories of pharmaceutical and biotechnology companies and universities.

IBM IntelliStation leads with Linux

From entrepreneurs to the enterprise, forward-thinking businesses are moving from proprietary UNIX-based workstations to the open source Linux platform. Freedom from OS licencing fees and the price/performance advantages of certified, standards-based systems add up to a compelling proposition.



Why buy IntelliStation?

Certified for more

IBM system engineers work directly with leading software vendors to compatibility-test and certify a host of leading applications on IntelliStation¹. If the software isn't certified, the ISV will not provide support.

Application performance

IBM workstation development resources are second to none – from research to integration to testing – a synergy that consistently delivers exceptional application performance.

Graphics expertise

Choose from leading multi-monitor 2D and OpenGL 3D graphics solutions, each an exceptional price/performer. IBM graphics engineers meticulously tune and test driver software for optimum performance.

Award-winning service & support

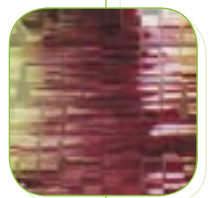
In addition to a 24x7 helpline and expert service/support teams, IntelliStation owners are afforded a unique level of Web-based support through 'Ask Engineering', an on-line service that helps customers optimise their workstations to suit their applications.

Usability

Ingenious design and customer input drive the form and function of award-winning IntelliStation workstations: "...We consider the whole package to be great value for money. All in all, it's a powerful, secure and expandable workstation." (PC Magazine, 3/2002)

IBM manageability

IBM is committed to helping customers deploy, manage and protect their workstation investment with standards-based IBM Manageability Tools, Lifecycle Care and IBM Global Services.



Affordable workstation power
IntelliStation E Pro

Workstation productivity at an outstandingly low price
Latest single processor technology from Intel®
Affordable 2D/3D graphic engines for demanding applications
Choice of small form factor, mini-tower or desktop design

Ultimate workstation performance
IntelliStation M Pro

Delivers high performance for computer intensive applications
Fast single or dual processor technology from Intel
A range of high end 2D/3D graphics engines
Highly scalable mini-tower designs



Processor	Intel Pentium™ 4 up to 2.2GHz	Intel Pentium 4 up to 2.2GHz	Intel Pentium 4 up to 2.4GHz	Intel Pentium 4 up to 2.4GHz	Intel Pentium 4 up to 2.8GHz	Intel Xeon™ up to 2.8GHz, dual capable
Core Logic	Intel 845 with 400MHz system bus	Intel 845 with 400MHz front side bus	Intel 845e with 533MHz front side bus	Intel 845e with 533MHz front side bus	Intel 850e with 533MHz front side bus	Intel 860 with 400MHz front side bus
Cache	512KB L2	512KB L2	512KB L2	512KB L2	512KB L2	512KB L2
Memory (std/max)	256MB / 1GB SDRAM	256MB / 1.5GB SDRAM	256 / 2GB DDR PC2100	256 / 2GB DDR PC2100	256 or 512MB / 2GB PC800 Rambus	512MB / 4GB PC800 Rambus
ECC memory (error checking)	Yes	Yes	Yes	Yes	Yes	Yes
S.M.A.R.T.² hard disk drives	40GB ³ / 7,200rpm ATA-100 EIDE 18.2GB / 10,000rpm Ultra160 SCSI	40GB / 7,200rpm ATA-100 EIDE 18.2GB / 10,000rpm Ultra160 SCSI	40GB / 7,200rpm ATA-100 EIDE 18.2GB / 10,000rpm Ultra160 SCSI	40GB / 7,200rpm ATA-100 EIDE 18.2GB / 10,000rpm Ultra160 SCSI	40GB / 7,200rpm ATA-100 EIDE 18.2GB / 10,000rpm Ultra160 SCSI	40GB / 7,200rpm ATA-100 EIDE 18.2GB / 10,000rpm Ultra160 SCSI
Controller	ATA-100 integrated; single channel Ultra160 SCSI PCI adapter	ATA-100 integrated; single channel Ultra160 SCSI PCI adapter	ATA-100 integrated; single channel Ultra160 SCSI PCI adapter	ATA-100 integrated; single channel Ultra160 SCSI PCI adapter	ATA-100 integrated; dual channel Ultra160 SCSI PCI adapter	ATA-100 integrated; dual channel Ultra160 SCSI integrated
Chassis	Small form factor desktop	Mini-tower	Small form factor desktop	Full size desktop	Mini-tower	Mini-tower
Slots	4 low profile (one 4X AGP, three PCI)	6 (one 4X AGP, five PCI)	4 low profile (one 4X AGP, three PCI)	4 (one 4X AGP, three PCI)	6 (one 4X AGP Pro 50, five 32-bit PCI)	6 (one 4X AGP Pro 110, two 64-bit / 66MHz PCI, three 32-bit / 33MHz PCI)
Bays	3 (Fully populated - HDD, CD, 3.5" diskette)	7 (three 3.5" internal, two 3.5" external, two 5.25" external)	3 (Fully populated - HDD, CD, 3.5" diskette)	4 (one 3.5" external, one 3.5" internal, two 5.25" external, 1 free)	7 (three 3.5" internal, two 3.5" external, two 5.25" external)	9 (six 3.5" internal, one 3.5" external, two 5.25" external)
Ports	1 parallel, 2 serial, 4 USB, 1 Ethernet (RJ45)	1 parallel, 2 serial, 4 USB, 1 Ethernet (RJ45)	4 USB 2.0, 1 parallel, 2 serial, 1 Ethernet (RJ45)	4 USB 2.0, 1 parallel, 2 serial, 1 Ethernet (RJ45)	2 serial, 1 parallel, 4 USB, 1 Ethernet (RJ45)	2 serial, 1 parallel, 2 USB, 1 Ethernet (RJ45)
Network interface	Integrated Intel 10/100 Ethernet with Wake on LAN [†]	Integrated Intel 10/100 Ethernet with Wake on LAN	Integrated Broadcom Gigabit Ethernet Wake on LAN, ASF	Integrated Broadcom Gigabit Ethernet Wake on LAN, ASF	Integrated Intel 10/100 Ethernet with Wake on LAN	Integrated Intel 10/100 Ethernet with Wake on LAN
Dimensions (w x d x h)	360 x 412 x 104mm	165 x 508 x 470mm	360 x 412 x 104mm	425 x 425 x 140mm	165 x 508 x 470mm	217 x 603 x 440mm
Graphics available:	2D Matrox G450 DVI (32MB) nVIDIA Quadro4 200 NVS (64MB) Both dual display capable	2D Matrox G450 DVI (32MB) nVIDIA Quadro4 200 NVS (64MB) Both dual display capable	2D Matrox G450 DVI (32MB) nVIDIA Quadro4 200 NVS (64MB) Both dual display capable	2D Matrox G450 DVI (32MB) nVIDIA Quadro4 200 NVS (64MB) Both dual display capable	2D Matrox G450 DVI (32MB) nVIDIA Quadro4 200 NVS (64MB) Both dual display capable	2D Matrox G450 DVI (32MB) nVIDIA Quadro4 200 NVS (64MB) Both dual display capable
	Advanced 3D	ATI Fire GL 8800 (128MB) Dual display capable		ATI Fire GL 8800 (128MB) Dual display capable	ATI Fire GL 8800 (128MB) Dual display capable	ATI Fire GL 8800 (128MB) Dual display capable
	Extreme 3D				Wildcat III 6110 (64MB frame buffer, 128MB frame buffer) nVIDIA Quadro4 900XGL (128MB) Both dual display capable	Wildcat III 6110 (64MB frame buffer, 128MB frame buffer) nVIDIA Quadro4 900XGL (128MB) Both dual display capable
Media Device	CD-ROM 48X-20X ⁴	CD-ROM 48X-20X	CD-ROM 48X-20X	CD-ROM 48X-20X	CD-ROM 48X-20X	CD-ROM 48X-20X
Operating System pre-loaded	Microsoft Windows XP, DOS license	Microsoft Windows XP, DOS license	Microsoft Windows XP, DOS license	Microsoft Windows XP, DOS license	Microsoft Windows 2000 / XP, DOS license	Microsoft Windows 2000 / XP, DOS license
Operating Systems supported	Major Linux distributions Windows 2000 Pro	Major Linux distributions Windows 2000 Pro	Major Linux distributions Windows 2000 Pro	Major Linux distributions Windows 2000 Pro	Certified for Microsoft Windows NT, Linux, compatible with Microsoft Windows 95/98 ^{††}	Certified for Microsoft Windows NT, Linux, compatible with Microsoft Windows 95/98
Audio	AC-97, microphone in, line in, line out, integrated speaker	AC-97, microphone in, line in, line out, integrated speaker	AC-97, microphone in, line in, line out, integrated speaker	AC-97, microphone in, line in, line out, integrated speaker	AC-97, microphone in, line in, line out, integrated speaker	AC-97, microphone in, line in, line out, integrated speaker
Warranty⁵	3 year on-site parts and labour	3 year on-site parts and labour	3 year on-site parts and labour	3 year on-site parts and labour	3 year on-site parts and labour	3 year on-site parts and labour

Options by IBM

IBM monitors in stealth black

- T210 20.8" hybrid flat panel
 - T860 18.1" hybrid flat panel
 - P275 21" (19.8" VIS) FD Trinitron CRT
 - P97 19" (18.0" VIS) FD Trinitron CRT
-

Memory

- E Pro SDRAM 128, 256, 512MB ECC
DDR 256, 512, 1024MB ECC
 - M Pro RDRAM 128, 256, 512MB ECC PC800
-

Second processor

- M Pro 6850 2.0, 2.2, 2.4 and 2.8GHz Intel Xeon Processor
-

Hard disk

- 18.2, 36.4 or 73.4GB 10,000rpm or 15,000rpm Ultra160 SCSI (Ultra2 compatible)
 - EIDE 40, 60, 80GB, 7,200rpm ATA/100
-

DVD-RAM

- IBM DVD-RAM/DVD-R Drive
-

CD-RW

- IBM 40x12x40X CD-RW
 - Internal IDE Drive
-

Tape drive

- TR5 10/20GB Internal IDE
-

Multimedia

- T860 Speaker/USB Hub
-

Graphics Control

- SpaceBall 3D Input Device

Selected certified / compatible applications

Digital Content Creation

- Adobe: Premier, After Effects, InDesign, Illustrator, Photoshop, GoLive
- Alias|Wavefront: Maya
- Avid: Xpress, Xpress DV, Media Composer, Symphony, Film Composer
- Discreet: edit, combustion, 3ds max
- Macromedia: Dreamweaver, Flash, Shockwave
- Newtek: Lightwave, Video Toaster
- Softimage: 3D Extreme, Toons, XSI

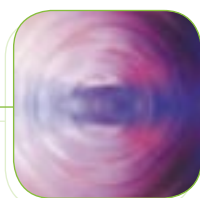
Engineering

- Autodesk: AutoCAD and Inventor
- IBM/Dassault Systèmes: CATIA Version 5
- PTC: Pro/ENGINEER
- UGS: Unigraphics
- Solidworks Corp.: Solidworks
- ESRI: ArcView

Financial Services

- Market Data, Analytics: Reuters, TIBCO, Bridge
- Risk Management: RiskMetrics, e-Risk

For a complete list of options and accessories for your IBM IntelliStation, visit ibm.com/pc/europe/options



Key:

- E Pro
- M Pro

nVIDIA Quadro4 200NVS

Part Number	Model	Memory	Processor	Speed	HDD	Operating System
KAU42xx	6216 42G	256MB	Pentium 4	2.4GHz	40/EIDE	Win XP
KBU42xx	6226 42G	256MB	Pentium 4	2.4GHz	40/EIDE	Win XP
P7T32xx	6229 32G	256MB	Pentium 4	2.4GHz	40/EIDE	Win XP
P7T33xx	6229 33G	512MB	Pentium 4	2.4GHz	18.2/SCSI	Win XP
P7T37xx	6229 37G	512MB	Pentium 4	2.4GHz	18.2/SCSI	Win XP
P7T42xx	6229 42G	256MB	Pentium 4	2.67GHz	40/EIDE	Win XP
P7T53xx	6229 53G	512MB	Pentium 4	2.8GHz	18.2/SCSI	Win XP
KDT62xx	6850 2G	512MB	Xeon	2.4GHz	40/EIDE	Win XP
KDT63xx	6850 63G	512MB	Xeon	2.4GHz	18.2/SCSI	Win XP
KDT67xx	6850 7G	512MB	Xeon	2.4GHz	18.2/SCSI	Win XP
KDT72xx	6850 72G	512MB	Xeon	2.8GHz	40/EIDE	Win XP
KDT73xx	6850 3G	512MB	Xeon	2.8GHz	18.2/SCSI	Win XP

Matrox G450 DVI

Part Number	Model	Memory	Processor	Speed	HDD	Operating System
KAU40xx	6216 40G	256MB	Pentium 4	2.4GHz	40/EIDE	Win XP
KAU20xx	6216 20G	256MB	Pentium 4	2.0GHz	40/EIDE	Win XP
KAU40xx	6216 40G	256MB	Pentium 4	2.4GHz	40/EIDE/P	Win XP
KAU40xx	6216 40G	256MB	Pentium 4	2.4GHz	40/EIDE	Win XP
KBU20xx	6226 20G	256MB	Pentium 4	2.0GHz	40/EIDE	Win XP
KBU40xx	6226 40G	256MB	Pentium 4	2.4GHz	40/EIDE	Win XP
P7T30xx	6229 30G	256MB	Pentium 4	2.4GHz	40/EIDE/P	Win XP
P7T40xx	6229 40G	256MB	Pentium 4	2.67GHz	40/EIDE	Win XP
KDT60xx	6850 60G	512MB	Xeon	2.4GHz	40/EIDE	Win XP
KDT70xx	6850 70G	512MB	Xeon	2.8GHz	40/EIDE	Win XP

Price



ATI FireGL 8800

Part Number	Model	Memory	Processor	Speed	HDD	Operating System
KBU45xx	6226 45G	256MB	Pentium 4	2.4GHz	18.2/SCSI	Win XP
P7T35xx	6229 35G	512MB	Pentium 4	2.4GHz	18.2/SCSI	Win XP
P7T45xx	6229 45G	512MB	Pentium 4	2.67GHz	18.2/SCSI	Win XP
KDT65xx	6850 65G	512MB	Xeon	2.4GHz	18.2/SCSI	Win XP
KDT75xx	6850 75G	512MB	Xeon	2.8GHz	18.2/SCSI	Win XP

nVIDIA Quadro4 900XGL

Part Number	Model	Memory	Processor	Speed	HDD	Operating System
KAU22xx	6216 22G	256MB	Pentium 4	2.0GHz	40/EIDE	Win XP
KAU23xx	6216 23G	256MB	Pentium 4	2.0GHz	18.2/SCSI	Win XP
KAU42xx	6216 42G	256MB	Pentium 4	2.4GHz	40/EIDE	Win XP
KBU22xx	6226 22G	256MB	Pentium 4	2.0GHz	40/EIDE	Win XP
KBU42xx	6226 42G	256MB	Pentium 4	2.4GHz	40/EIDE	Win XP
PT747xx	6229 47G	512MB	Pentium 4	2.67GHz	18.2/SCSI	Win XP
PT757xx	6229 57G	512MB	Pentium 4	2.8GHz	18.2/SCSI	Win XP
KDT77xx	6850 77G	512MB	Xeon	2.8GHz	18.2/SCSI	Win XP



Wildcat III 6110

Part Number	Model	Memory	Processor	Speed	HDD	Operating System
P7T36xx	6229 36G	512MB	Pentium 4	2.4GHz	18.2/SCSI	Win XP
P7T56xx	6229 56G	512MB	Pentium 4	2.8GHz	18.2/SCSI	Win XP
KDT66xx	6850 66G	512MB	Xeon	2.4GHz	18.2/SCSI	Win XP
KDT76xx	6850 6G	512MB	Xeon	2.8GHz	18.2/SCSI	Win XP

Images created using the IBM IntelliStation supplied courtesy of Pepper's Ghost Productions (PGP) and Catia.



Performance - Advanced 3D

Performance - Extreme 3D

Performance - 2D

* Win 2000 / DOS models available on request
 ** For the full range of IntelliStation models and graphics cards visit ibm.com/pc/europe/intellistation



IBM United Kingdom Limited

EMEA IBM @server xSeries Marketing
Alencon House
PO Box 32
Alencon Link
Basingstoke
RG21 7EJ
United Kingdom

The IBM home page can be found at **ibm.com**

- * IBM, the IBM logo, IntelliStation and Wake on LAN are trademarks of International Business Machines Corporation in the United States, other countries, or both.
- ** Microsoft, Windows, Windows NT, and the Windows logo are trademarks of Microsoft Corporation in the United States, other countries, or both.
- ** Pentium and Xeon are trademarks of Intel Corporation in the United States, other countries, or both.
- ** UNIX is a registered trademark of The Open Group in the United States, other countries, or both.

Other company, product and service names may be trademarks, or service marks of others.

- ¹ IBM makes no representations or warranties regarding non-IBM products. These products are offered and warranted by third parties, not IBM.
- ² Self-Monitoring, Analysis and Reporting Technology.
- ³ GB equals one thousand million bytes when referring to storage capacity. Accessible capacity is less.
- ⁴ Variable read rate. Actual playback speed will vary and is often less than the maximum possible.
- ⁵ For information regarding the IBM Statement of Limited Warranty, contact your Business Partner or IBM Marketing Representative. With respect to onsite service, a technician is sent after IBM attempts to diagnose and resolve the problem remotely.

References in this publication to IBM products, programs or services do not imply that IBM intends to make these available in all countries in which IBM operates. Any reference to an IBM product, program or service is not intended to imply that only IBM's product, program or service may be used. Any functionally equivalent product, program or service may be used instead.

IBM hardware products are manufactured from new parts, or new and used parts. In some cases, the hardware product may not be new and may have been previously installed. Regardless, IBM warranty terms apply.

This publication is for general guidance only.

Photographs may show design models.

© Copyright IBM Corporation 2002